



## Tamper proof Windshield Tag

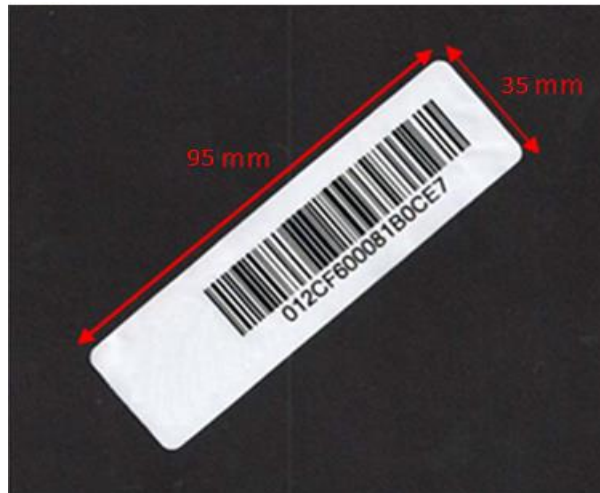
### FEATURES

- Windshield tag is a tamper proof tag and can be easily attached with self adhesive tape.
- It is a flexible tag and operates effectively with read range of over 8-10m when attached inside of vehicle's windshield.
- Unique serial number and the associated barcode are printed at the front of the tag to allow automated processing and easy issuing to end-users.

### APPLICATIONS

- It can be used in Electronic Toll Collection & transport systems, vehicle identification.
- Factory automation, Automotive & Security purpose.

<b>Chip Type:</b>	<b>EPC Class 1 Gen 2; ISO 18000-6C protocol compliant</b>	
	Alien Higgs 3 having EPC 96 bit extendable up to 480 bit	
	User Memory 512 bit	
	Data retention of 50 years	
	Write endurance of 100,000 cycles	
<b>Mechanical:</b>	<b>Dimension</b>	95 x 35 x 0.3 mm
	<b>Material</b>	PP label
	<b>Color</b>	White
	<b>Weight</b>	0.11 g
<b>Electrical:</b>	<b>Operating Frequency</b>	865 – 868 MHz
	<b>Operating mode</b>	Passive (battery-less transponder)
<b>Ingress Protection:</b>	IP65	
<b>Thermal:</b>	<b>Storage Temp.</b>	-25°C to +85°C
	<b>Operating Temp.</b>	-25°C to +85°C
<b>Part Number:</b>	367V2-1	
<b>Options:</b>	<b>Available with:</b>	
	Other IC type on request	
	Tags are delivered in rolls.	



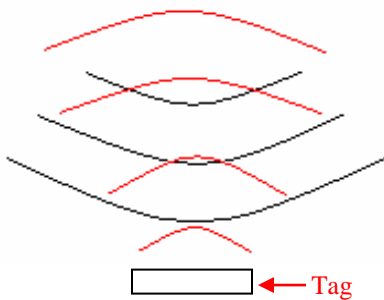
Tag Placement

- ✚ Windshield tag is polarized parallel to the length of the tag.
- ✚ Ensure that there is no hindrance between the tag and the reader antenna.
- ✚ Reader antenna should be parallel to the tag length as shown in below figure:

Correct way



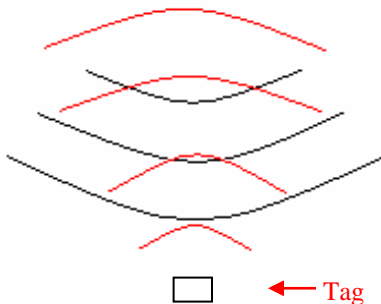
Antenna



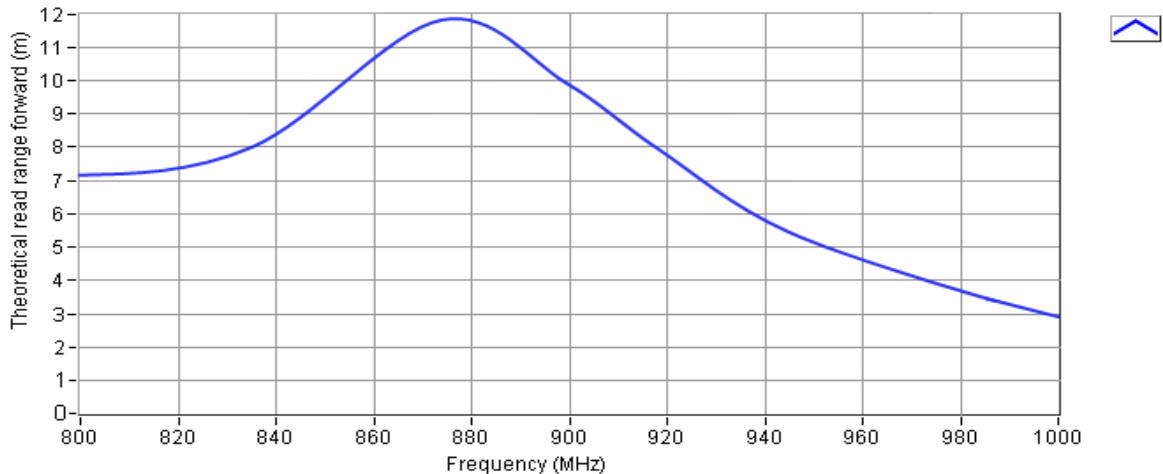
Wrong way



Antenna



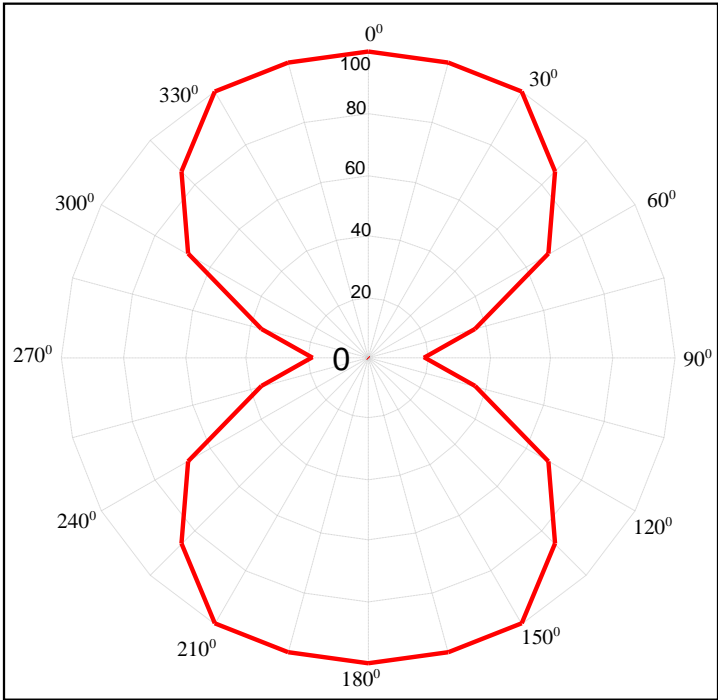
# Read Range v/s Frequency



# Angular Sensitivity

## Tamper proof Windshield Tag Angular Sensitivity

(Relative Read Range vs. Orientation)



Read range (in percent) at various angle.

