



Secure-it Tag (Tamper-proof)

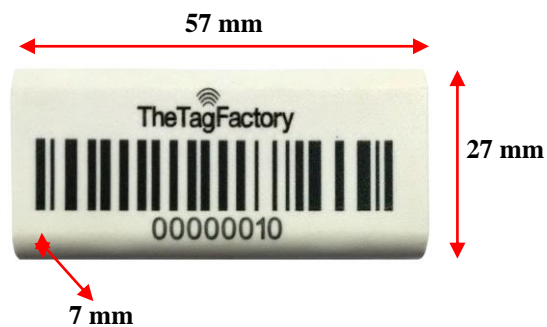
FEATURES

- Secure-it Tag is a Tamper-proof hard tag & operates effectively with a good read range, especially when attached to metal.
- Rugged construction makes the tag tamper-proof.
- Provided with VHB Adhesive tape for easy attachment.
- The tag does not have a battery, making it low cost and life-long.
- Flexible Read/Write Range (reader dependant).

APPLICATIONS

- Used in applications where security required such as Laptops, desktops, servers, Equipment, and warehousing solutions.
- Rental & returns tracking for tools, vehicles, or other equipment.
- Factory automation, Automotive & Security purpose.

Chip Type:	Alien Higgs 3 EPC Class 1 Gen 2	
	EPC Memory: 96-bit extendable up to 480 bits	
	User Memory: 512 bits	
	Data Retention: 50 years	
	Write Endurance: 100,000 cycles	
Mechanical:	Dimension	57 x 27 x 7mm
	Material	PC
	Colour	White
	Weight	9.3g
Electrical:	Operating Frequency	865-868MHz, (902-928MHz also available on request)
	Operating mode	Passive (battery-less transponder)
Ingress Protection:	IP64	
Thermal:	Storage Temp.	-25°C to +85°C
	Operating Temp.	-25°C to +85°C
Part Number:	31CV1	
Options:	Available with:	
	Other frequency on request. Other plastic material and colours	

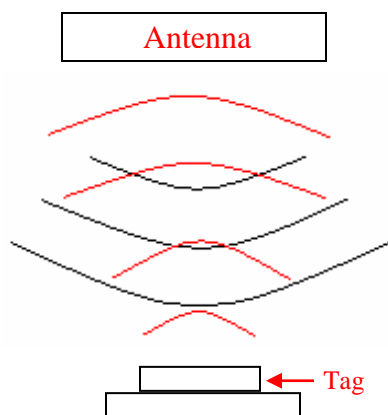


Note: Tolerance applicable are **Length:** $\pm 1\text{mm}$, **Width:** $\pm 0.5\text{mm}$ and **Thickness:** $\pm 0.3\text{mm}$

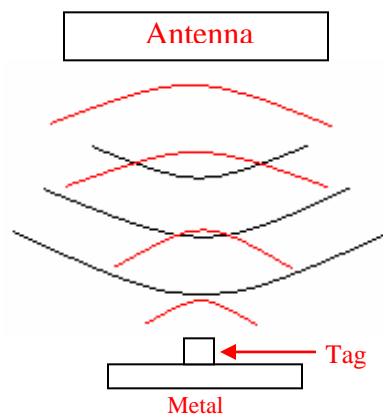
Tag Placement

- Secure-it Tag is polarized perpendicular to TTF logo.
- Place the tag in such a way that most of its bottom area comes in direct contact with metal.
- Ensure that there is no hindrance between the tag and the reader antenna.
- Reader antenna should be parallel to the tag length as shown in below figure:

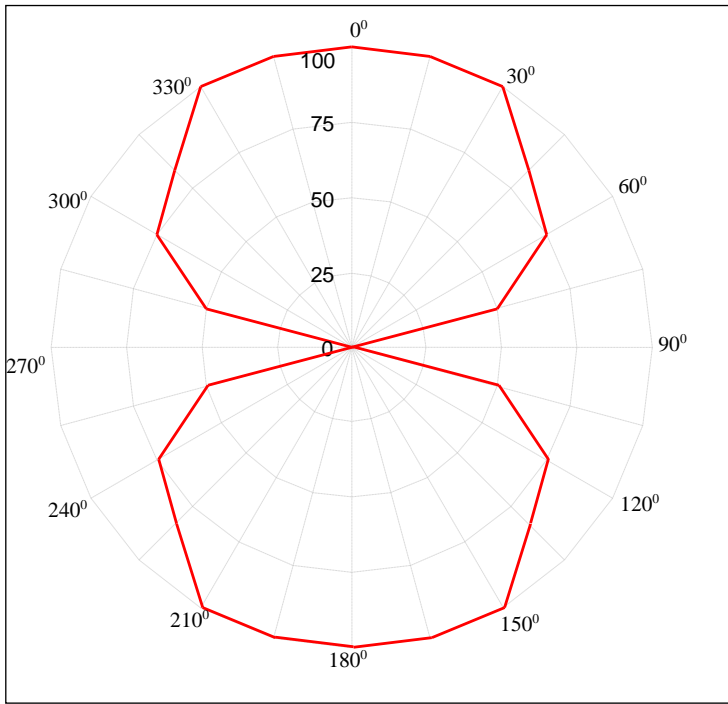
Correct way



Wrong way



Secure-it Tag Angular Sensitivity
(Relative Read Range vs. Orientation)



Read range (in percent) at various angle.

